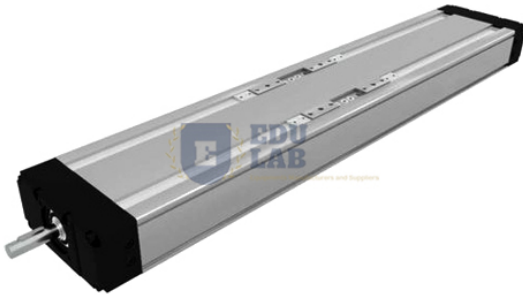


**Product Code . EL-EELE-11413**

## Linear Unit



### Description

---

#### Linear Unit

#### Technical Specifications Required:

- Guide rails Should be safely protected from damage due to mechanical impact.
- Tightening mechanism for toothed belt.
- Should prevent damage occurring even if invalid parameters are input for the end limit switches.
- Integrated end switches with normally open and normally closed contacts.
- Should involve a toothed belt drive.
- Should be coupled with a synchronous servo system and the two operated in conjunction.
- Overall length of travel: 700mm to 800mm.




We are leading manufacturers, suppliers of Linear Unit for Electronics Engineering Lab Equipments. Contact us to get high quality Linear Unit for Electronics Engineering Lab Equipments for schools, colleges, universities, research labs, laboratories and various industries.

{ "@context": "https://schema.org/", "@type": "Product", "name": "Linear Unit", "image":

---

"http://www.educational-equipments.com/images/catalog/product/76801937LinearUnitWithlogo.jpg",  
"description": "Technical Specifications Required: • Guide rails Should be safely protected from damage due to mechanical impact. • Tightening mechanism for toothed belt. • Should prevent damage occurring even if invalid parameters are input for the end limit switches. • Integrated end switches with normally open and normally closed contacts. • Should involve a toothed belt drive. • Should be coupled with a synchronous servo system and the two operated in conjunction. • Overall length of travel: 700mm to 800mm. We are leading manufacturers, suppliers of Linear Unit for Electronics Engineering Lab Equipments. Contact us to get high quality Linear Unit for Electronics Engineering Lab Equipments for schools, colleges, universities, research labs, laboratories and various industries.", "brand": "Educational Lab Equipments", "sku": "5", "gtin8": "5", "gtin13": "5", "gtin14": "5", "mpn": "5", "aggregateRating": { "@type": "AggregateRating", "ratingValue": "5", "bestRating": "5", "worstRating": "0", "ratingCount": "15" } }

---

Educational Lab Equipments,  
#449, HSIIDC, Industrial Area, Saha, Haryana  
Direct Contact Details  +91-98173-19615  sales@educational-equipments.com  
 [www.educational-equipments.com](http://www.educational-equipments.com)