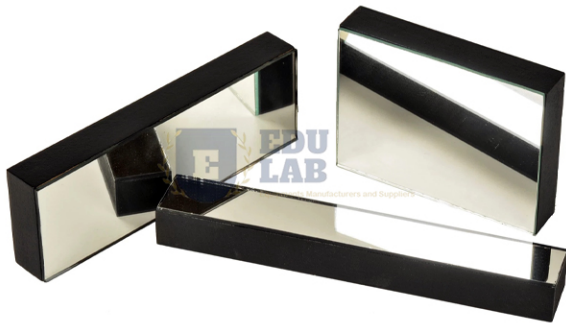


Product Code . EL-PLE-10937

Plane Mirror, Glass Mounted



Description

Plane Mirror, Glass Mounted

Back silvered with protective coating.

Mounted on wooden block 20mm thick approx.

Size:-

150 x 50mm

100 x 75mm

75 x 25mm

```
{ "@context": "https://schema.org/", "@type": "Product", "name": "Plane Mirror, Glass Mounted",  
"image": "http://www.educational-  
equipments.com/images/catalog/product/414091646PlaneMirror,GlassMounted.jpg", "description":  
"Plane Mirror, Glass Mounted Back silvered with protective coating. Mounted on wooden block 20mm  
thick approx. Size:- 150 x 50mm 100 x 75mm 75 x 25mm", "brand": "Educational Lab Equipments",  
"aggregateRating": { "@type": "AggregateRating", "ratingValue": "5", "bestRating": "5", "worstRating":  
"0", "ratingCount": "30" } }
```

Educational Lab Equipments,
#449, HSIIDC, Industrial Area, Saha, Haryana
Direct Contact Details ☎ +91-98173-19615 ✉ sales@educational-equipments.com

